

## 3Com Baseline Switch 2250 Plus

### DATA SHEET



- Enterprise-class, cost-optimized “smart” switch for Small-to-Mid-sized businesses
- 48 10/100 ports with 2 dual purpose Gigabit uplinks
- Web-based configuration for ease-of-use in set up and installation
- Wire-speed, non-blocking performance in a 1-RU form factor
- Rack-mount or desktop operation

### Key Benefits

#### Overview

The “smart” 3Com® Baseline Switch 2250 Plus is the latest member in the family of premium value Baseline Plus switches that deliver enterprise-class solutions, customized and priced for small and mid-sized organizations.

The 3Com Baseline Switch 2250 Plus provides forty-eight 10/100 ports and two dual-purpose Gigabit ports to connect to high-performance computers, high demand servers, or core network backbones, either using the built-in copper Gigabit uplink ports or the SFP based slots for Gigabit fiber connections. With a low entry cost, the 3Com Baseline Switch 2250 Plus offers advanced administration through a user-friendly browser interface so that even network novices can easily configure and administer the network. QoS and VLAN support allows greater scalability and support for business-critical applications such as customer relation management (CRM), supply chain management (SCM) and video conferencing. Ports can be trunked, or aggregated, to create an ultra-high bandwidth pipe to the network core.

#### Ethernet Switching

The 3Com Baseline Switch 2250 Plus is a non-blocking Layer 2 switch—all ports switch at wire speed—which helps to eliminate network traffic bottlenecks. Once more, Link aggregation via IEEE802.3ad allows administrators to group any number of copper or fiber ports together to form an ultra-high bandwidth pipe that greatly expands bandwidth capacity to the network backbone. The switch also supports VLANs, which segment the network by grouping users based on data or traffic exchange requirements. These switching features ensure optimal use of available bandwidth as traffic flow is directed according to the needs of the business.

#### Intuitive web browser-based user interface

The 3Com Baseline Switch 2250 Plus provides an easy-to-use web-based interface that allows even novice users to quickly and confidently configure the switch during initial setup or normal operation. The web interface makes it easy to configure individual port speeds and duplex configuration, VLANs, Link aggregation, and traffic prioritization, as well as keep an eye on network traffic and statistics. These capabilities make the switch an exceptional value.

#### An enterprise-class solution for Small-to-Mid-sized businesses

The 3Com Baseline Switch 2250 Plus is operational straight out of the box; as long as basic settings are acceptable, there is no need to configure the switch. For networks that require more control, the user-friendly web based interface provides easy-to-use tools to design your network for optimal use. All 3Com networking products go through vigorous testing to ensure top reliability. A proven reputation for quality is backed by an industry-leading support package with a [Limited Lifetime Hardware Warranty and Worldwide Next Business Day Advance Hardware Replacement](#).

#### Service

3Com products are backed by 3Com Global Services and authorized partners with demonstrated expertise in network assessment, implementation, and maintenance. Ask about which 3Com Network Health Check, installation services, and maintenance service packages are available in your area.

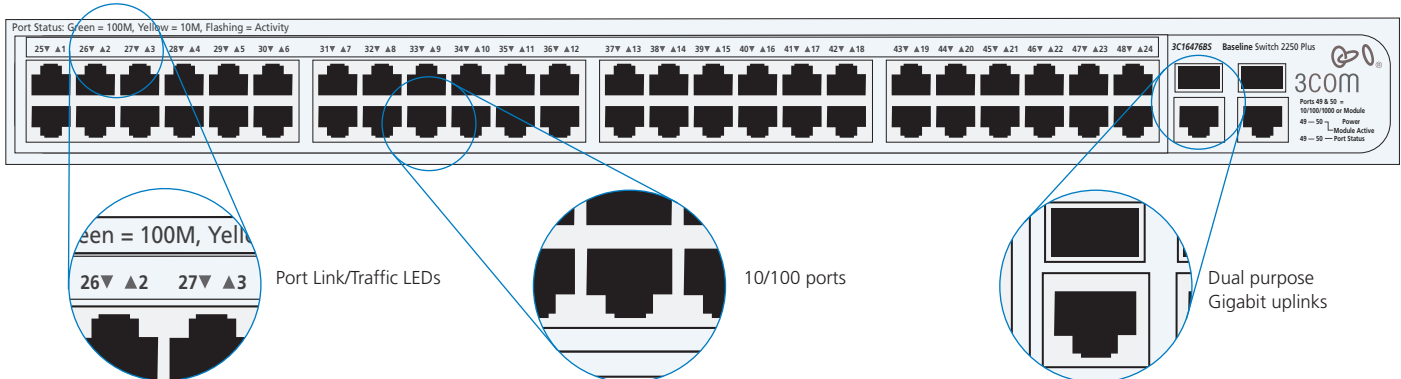
## Product Benefits

FEATURES	BENEFITS
Outstanding value	Take advantage of flexible, configurable and powerful switching that costs not much more than an unmanaged switch.
Flexible Gigabit uplinks	Choose to daisychain multiple units together via the built-in copper Gigabit uplink ports or connect to a network backbone via SFP-based fiber modules.
Browser-based user interface for switch configuration and administration	Extremely easy-to-use user interface allows even the most novice users to configure the switch during initial setup or normal operation.
VLANs	Segment the network by grouping users based on their data or traffic exchange requirements. This ensures optimal use of available bandwidth as traffic flow is directed according to the needs of the business.
Link aggregation (trunking)	Group together any number of copper or fiber ports to form an ultra-high bandwidth pipe connecting the switch to a network backbone and prevent any traffic bottlenecks. The switch supports up to four trunks and up to eight ports per trunk.
Traffic monitoring (port mirroring)	Administrators can examine suspect data streams received on any port by mirroring the data stream to a monitoring port.
Limited Lifetime Warranty and Advanced Hardware Replacement	Offering complete peace of mind.

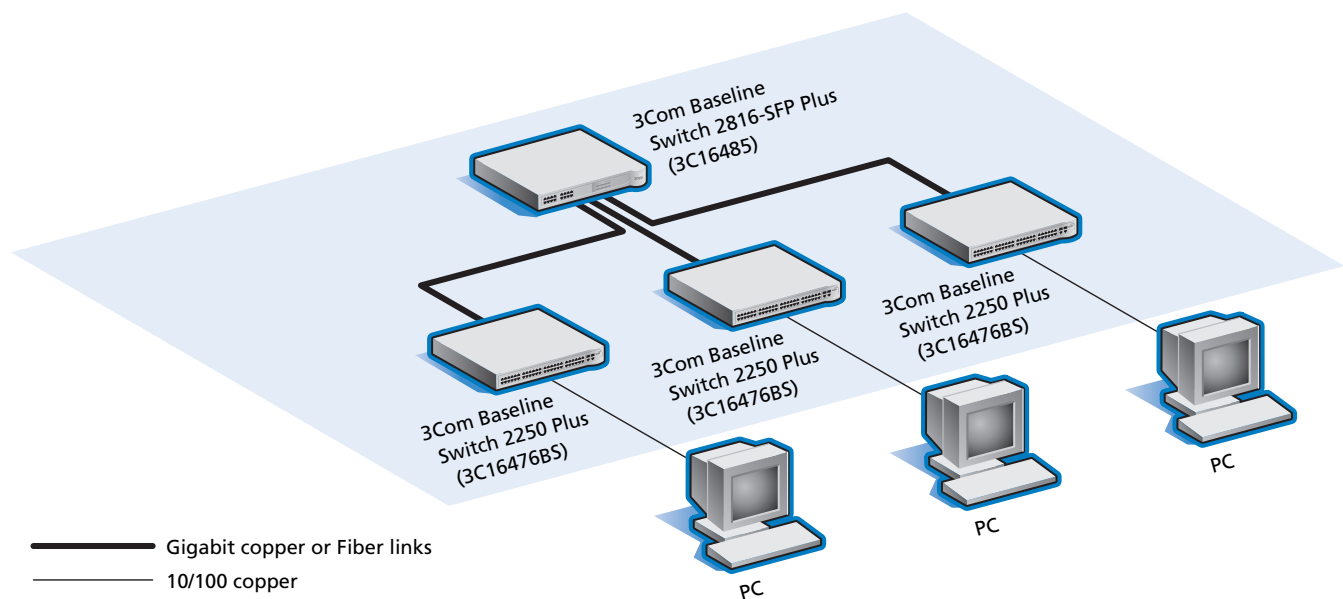
## Product Features

	Description
<b>PERFORMANCE</b>	
Switching Capacity	13.6 Gbps
Forwarding Rate	10.1 Mpps
Forwarding Method	Store and Forward
<b>LAYER 2 SWITCHING</b>	
MAC Addresses	8,000 MAC addresses
VLAN	256 VLAN's (IEEE802.1Q)
Link Aggregation	Manual as per IEEE802.3ad
Auto Negotiation	Auto-negotiation and Automatic MDI/MDIX on all ports
Traffic Control	IEEE802.3x full-duplex flow control
<b>CONVERGENCE</b>	
Priority Queuing	Four hardware queues per port Weighted round-robin queuing
<b>MANAGEMENT</b>	
Device Management	Web-based configuration for: <ul style="list-style-type: none"> <li>• Port, speed, duplex configuration</li> <li>• VLANs</li> <li>• Link Aggregation</li> <li>• Traffic Monitoring</li> </ul>

### 3Com Baseline Switch 2250 Plus Front Panel



## Typical Installation



## Specifications

### LED Indicators

Module active, Power, Link status/Speed/active

### At-a-Glance Traffic Monitoring

Ports: active, enabled, disabled

Modules: present, active

Unit fans: OK, failed

### Power Requirements

Power Inlet: IEC 320

AC line Frequency: 50/60 Hz

Operating Input voltage: 100-240 VAC

Current Rating: 2 Amp (maximum)

Maximum Power Consumption: 56W

Maximum Power Dissipation: 184.3 BTU/hr

### Physical Specifications

#### Dimensions

Height: 43.6 mm (1.7 in) or 1U

Width: 440 mm (17.3 in)

Depth: 235.5mm (9.2 in)

Weight: 3.1 kg (6.83 lb)

### Environmental Specifications

Operating Temperature: 0° to 45°C (32° to 113°F)

Operating Humidity: 10 to 95% (non-condensing)

Standard: EN 60068 (IEC 68)

### Regulatory/Agency Approvals

Safety: UL60950-1, EN 60950-1, CSA 22.2 60950-1, IEC 60950-1

Emissions: EN 55022 Class A, FCC Part 15 Subpart B Class A, ICES-003 Class A, VCCI Class A, AS/NZS 3548 Class A,

Environmental: EN 60068 (IEC 68)

Immunity: EN 55024

### Standards Conformance

ISO 8802-3

IEEE 802.3 (Ethernet)

IEEE 802.3u (Fast Ethernet)

IEEE 802.1d (Bridging)

IEEE 802.1Q (VLANs)

IEEE 802.3ab (Gigabit Ethernet)

IEEE 802.1p (Traffic Prioritization)

### Package Contents

One power cord

One switch unit

Four self-adhesive, rubber pads

One rack-mount kit

One user guide

One installation CD

Warranty flyer

### Warranty

Limited Lifetime Hardware Replacement

Other Service Benefits: Advance hardware replacement with same day shipment for North America and Western Europe. Next day shipment for rest of world.

Calls must be received by published cut-off times.

90 days of telephone technical support.

Limited software updates.

See [www.3com.com/warranty](http://www.3com.com/warranty) for more detail.

Register products at <http://eSupport.3com.com/>

## Ordering Information

PRODUCT DESCRIPTION	3COM SKU
3Com® Baseline Switch 2250 Plus	3C16476BS
<b>Product Options</b>	
3Com® 1000BASE-SX SFP Transceiver	3CSFP91
3Com® 1000BASE-LX SFP Transceiver	3CSFP92



3Com Corporation, Corporate Headquarters, 350 Campus Drive, Marlborough, MA 01752-3064

To learn more about 3Com solutions, visit [www.3com.com](http://www.3com.com). 3Com is publicly traded on NASDAQ under the symbol COMS.

Copyright © 2005 3Com Corporation. All rights reserved. 3Com and the 3Com logo are registered trademarks of 3Com Corporation. Exercise Choice is a trademark of 3Com Corporation. All other company and product names may be trademarks of their respective companies. While every effort is made to ensure the information given is accurate, 3Com does not accept liability for any errors or mistakes which may arise. Specifications and other information in this document may be subject to change without notice.

400894-002 05/05